

Features

- **Noise Figure ≤ 2.8 dB**
- Unconditionally Stable at all temperatures
- Internally Regulated DC Voltage
- 50 Ohm Matched Input/Output
- Field Replaceable 2.92mm K connectors
- Excellent Group Delay and Phase Linearity
- 0.009 inches diameter RF In/Out feed through
- Operating Temp. -55 C to +85 C
- 3 Year Warranty

Options

- **Optimized Performance over Selected Bandwidth**
- Internally DC Block Input (Output DC Block Standard)
- Hermetically Sealed Package
- Improved Gain Flatness
- Improved IN and OUT VSWR
- Gain and Phase matching
- Lower Noise Figure

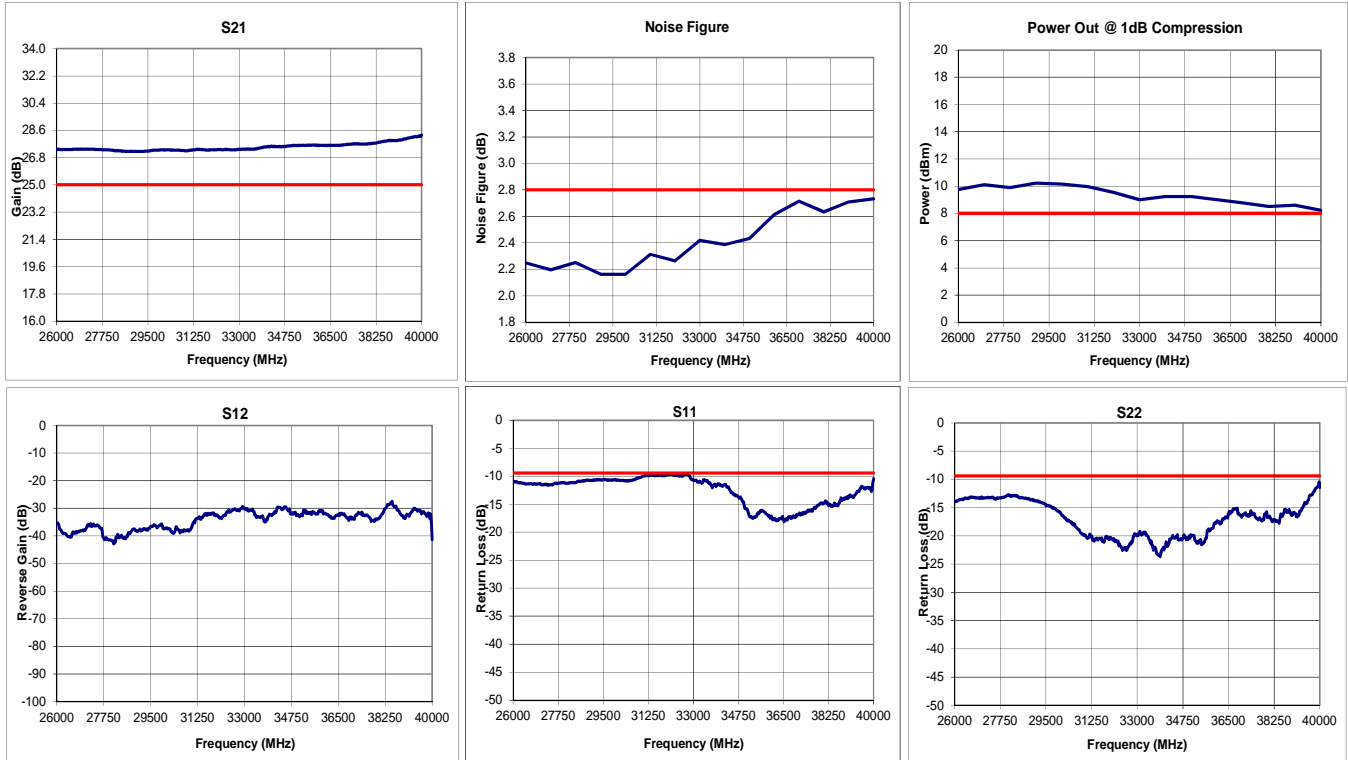


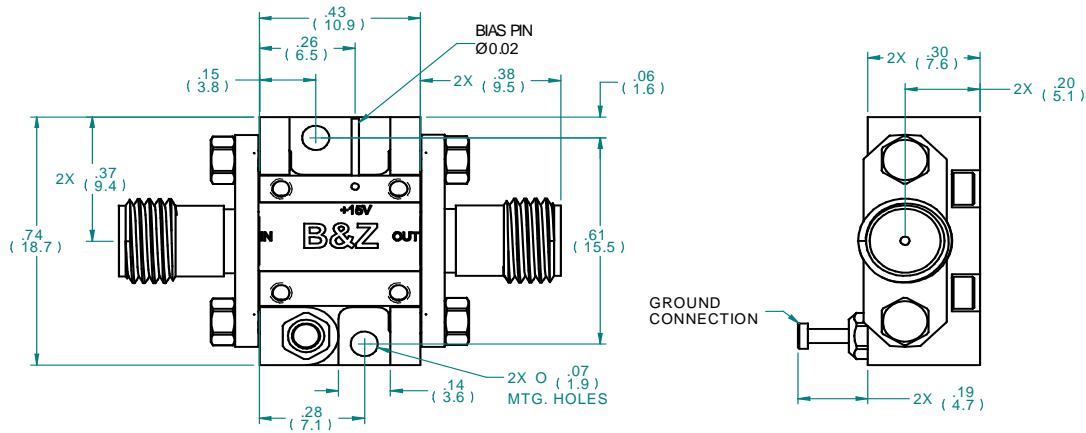
Specifications (23 °C)

| Parameter | Min | Typ | Max | Units |
|----------------------------|-------------------|-----------|---------|-------|
| Frequency Range | 26 | - | 40 | GHz |
| Noise Figure* | - | 2.7 | 2.8 | dB |
| Gain | 25 | 27 | - | dB |
| Gain Flatness (+/-) | - | ± 1.5 | ± 2 | dB |
| P1 Output Power | +8 | +9 | - | dBm |
| Input VSWR | - | - | 2.0:1 | |
| Output VSWR | - | - | 2.0:1 | |
| Operating Temperature | -55 | - | +85 | °C |
| Non-Operating Temp Range | -65 | - | +85 | °C |
| RF Input Power (no-damage) | - | - | +13 | dBm |
| Humidity (non-condensing) | - | - | 95 | % |
| Voltage | +8 | +12 | +15 | VDC |
| Current | - | 105 | | mA |
| Input Impedance | 50 | | | Ohms |
| RF Connector | 2.92mm - Female | | | |
| Dimensions | 29.9 x 18.7 x 7.6 | | | mm |

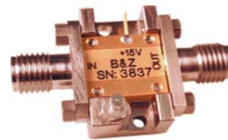
* Noise Source used for measurement from 18GHz to 42 GHz is HP346C-K01.
NF Uncertainty (approx. 0.3 dB). 0.2 dB due to ENR of HP 346C-K01, and 0.1 dB due to the gain modulation of the unit caused by the HP 346C-K01 source impedance change in the ON and OFF state.

Typical Data

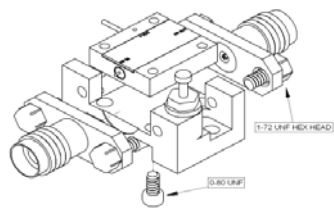




Approx. Actual Size



Mounting Drawing



Drop In

