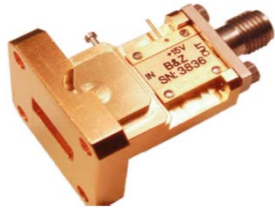


Features

- Noise Figure ≤ 1.0 dB (typ)
- Unconditionally Stable at all temperatures
- Internally Regulated DC Voltage
- 50 Ohm Matched Input/Output
- Connector: WR-112 Input/ SMA-Female Output
- Excellent Group Delay and Phase Linearity
- 0.009 inches diameter RF In/Out feed through
- Operating Temp. -55 C to +85 C
- 3 Year Warranty

Options

- **Optimized Performance over Selected Bandwidth**
- Internally DC Block Input (Output DC Block Standard)
- Hermetically Sealed Package
- Improved Gain Flatness
- Improved IN and OUT VSWR
- Gain and Phase matching
- Lower Noise Figure

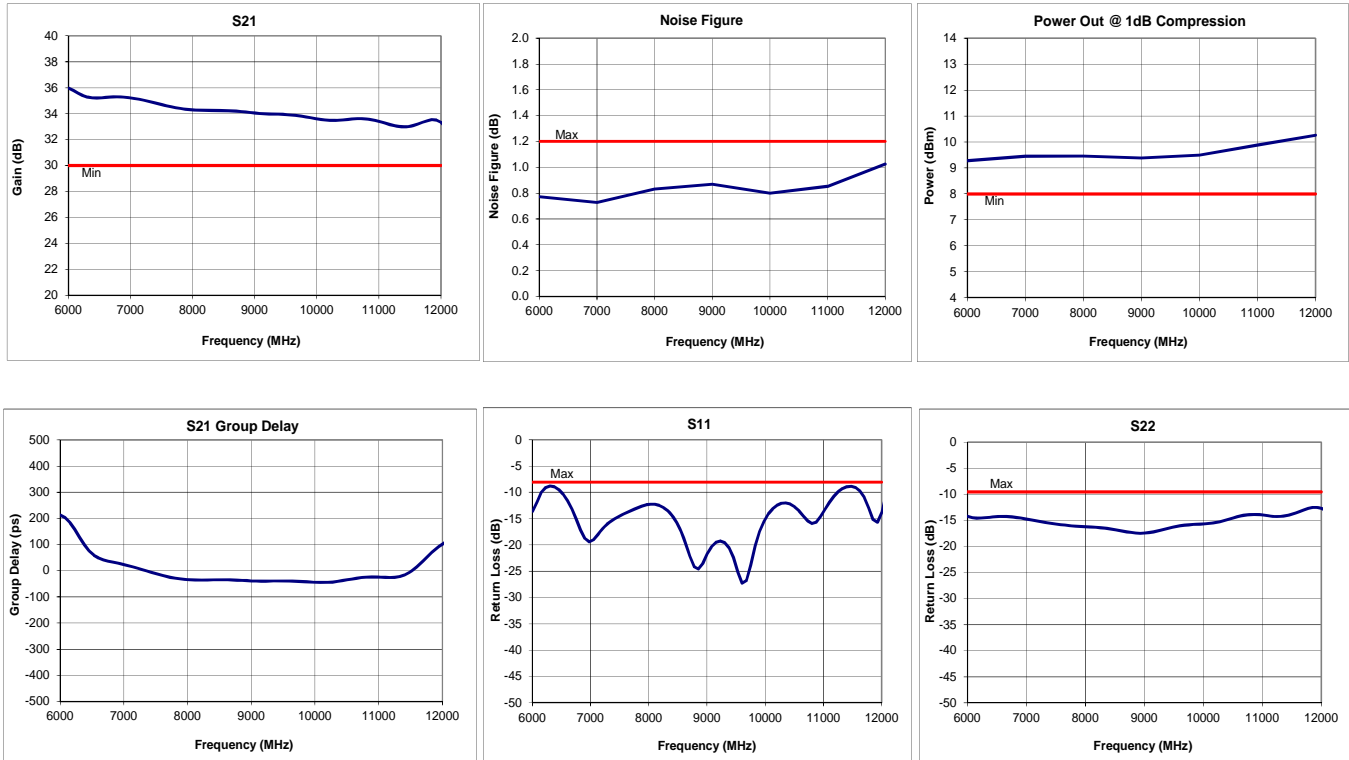


Specifications (23 °C)

| Parameter | Min | Typ | Max | Units |
|----------------------------|--------------------|-----------|-----------|-------|
| Frequency Range | 6 | - | 12 | GHz |
| Noise Figure* | - | 1.0 | 1.2 | dB |
| Gain | 30 | 33 | - | dB |
| Gain Flatness (+/-) | - | ± 1.5 | ± 2.0 | dB |
| P1 Output Power | +8 | +9 | - | dBm |
| Input VSWR | - | - | 2.3:1 | |
| Output VSWR | - | - | 2.0:1 | |
| Operating Temperature | -55 | - | +85 | °C |
| Non-Operating Temp Range | -65 | - | +85 | °C |
| RF Input Power (no-damage) | - | - | +13 | dBm |
| Humidity (non-condensing) | - | - | 95 | % |
| Voltage | +12 | +12 | +15 | VDC |
| Current | - | 65 | | mA |
| Input Impedance | 50 | | | Ohms |
| RF Connector | WR-112 In/ SMA Out | | | |

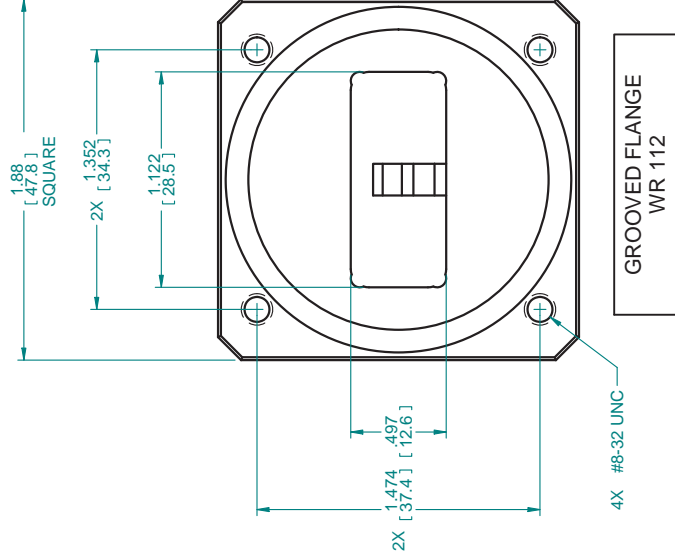
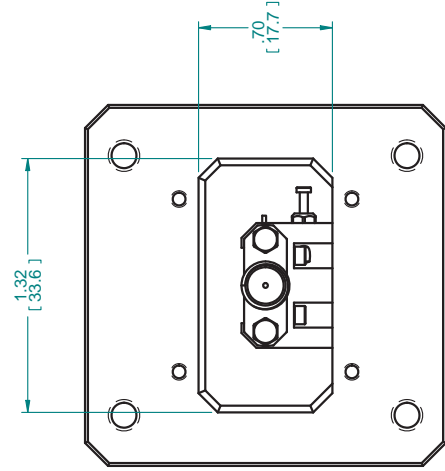
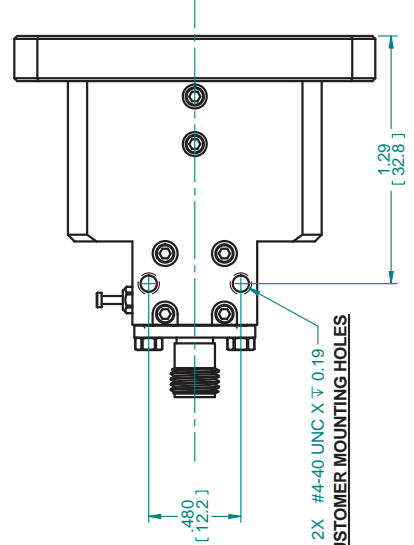
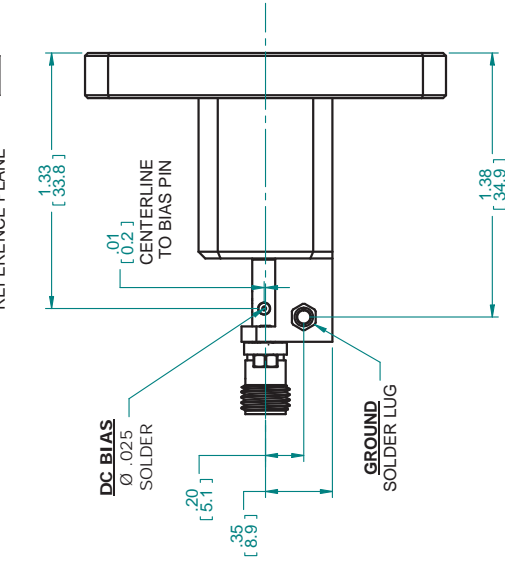
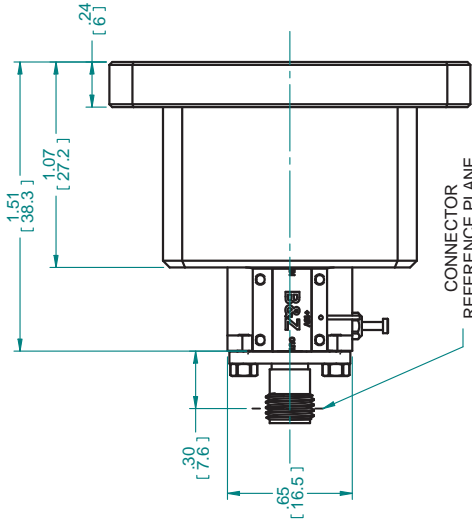
* Noise Source used for measurement from 0.01 to 26.5 GHz is HP346C .
NF Uncertainty (approx. 0. 1dB). 0.05 dB due to ENR of HP 346C; and 0.05 dB, due to the gain modulation of the unit, caused by the HP 346C source impedance change in the ON and OFF state.

Typical Data



| REVISION HISTORY | | |
|------------------|-------------|------|
| REV | DESCRIPTION | DATE |
| | | |

| REV | DESCRIPTION | DATE | APPROVED |
|-----|-------------|------|----------|
| | | | DS |



4X #8-32 UNC

| | | | |
|--|--------|----------------------|------|
| | | NAME | DATE |
| DRAWN | Dan S. | 03/12/09 | |
| CHECKED | | | |
| ENG APPR | | | |
| MGR APPR | | | |
| TITLE | | | |
| OUTLINE | | | |
| WR-112 | | | |
| SIZE | DWG NO | REV | |
| C | 100137 | A | |
| UNLESS OTHERWISE SPECIFIED DIMENSIONS ARE IN INCHES ANGLES ±0.5° | | | |
| SCALE: 2 PL ±0.01 3 PL ±0.005 | | WEIGHT: SHEET 1 OF 1 | |

FILE NAME: 100137_A.Outline_WR-112.dwg