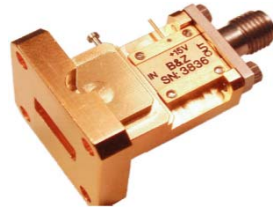


**Features**

- Noise Figure  $\leq 2.0$  dB
- Unconditionally Stable at all temperatures
- Internally Regulated DC Voltage
- 50 Ohm Matched Input/Output
- Excellent Group Delay and Phase Linearity
- 0.009 inches diameter RF In/Out feed through
- Operating Temp. -55 C to +85 C
- 3 Year Warranty

**Options**

- **Optimized Performance over Selected Bandwidth**
- Internally DC Block Input (Output DC Block Standard)
- Hermetically Sealed Package
- Improved Gain Flatness
- Improved IN and OUT VSWR
- Gain and Phase matching
- Lower Noise Figure

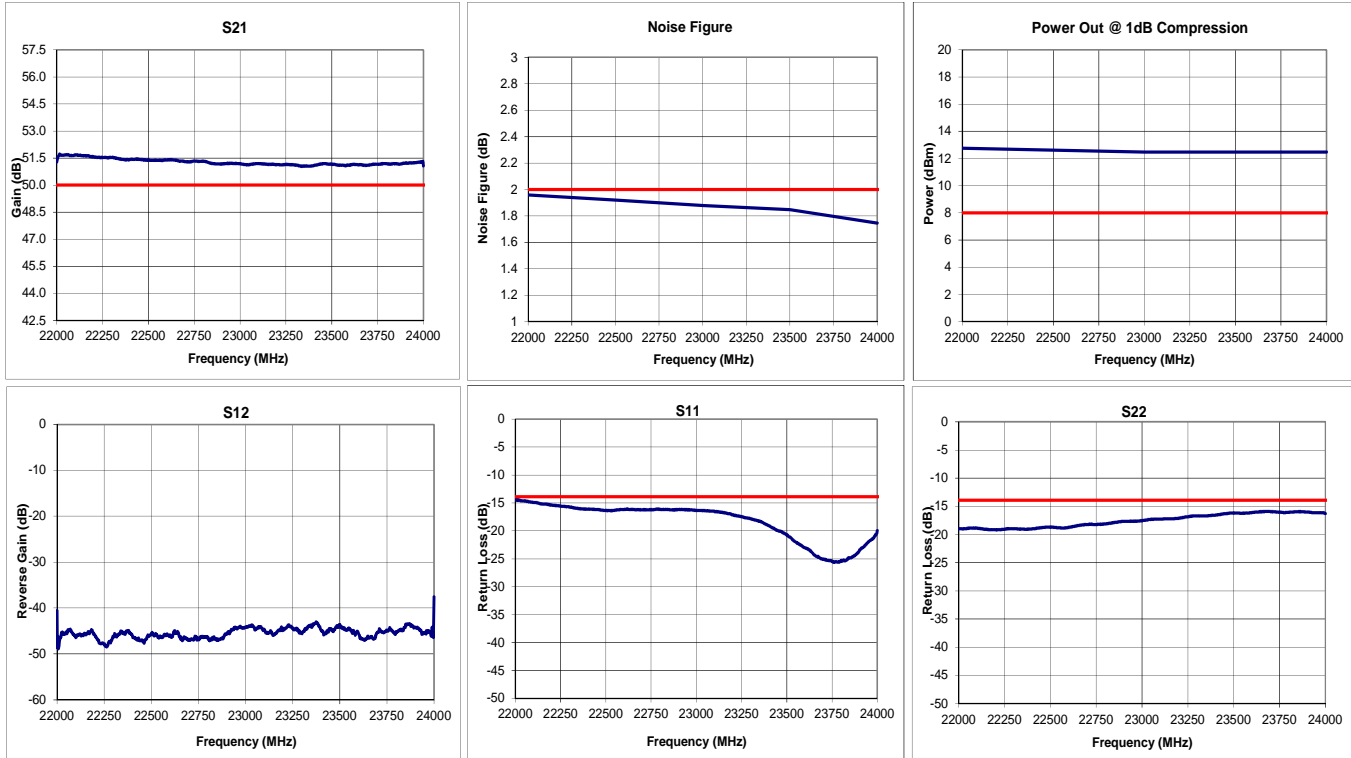


**Specifications (23 °C)**

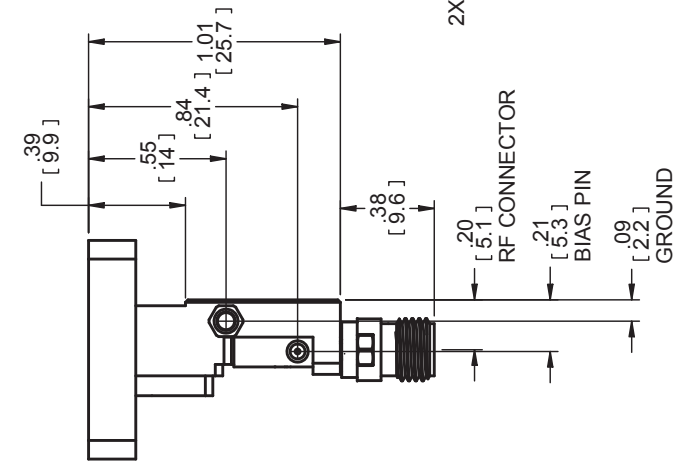
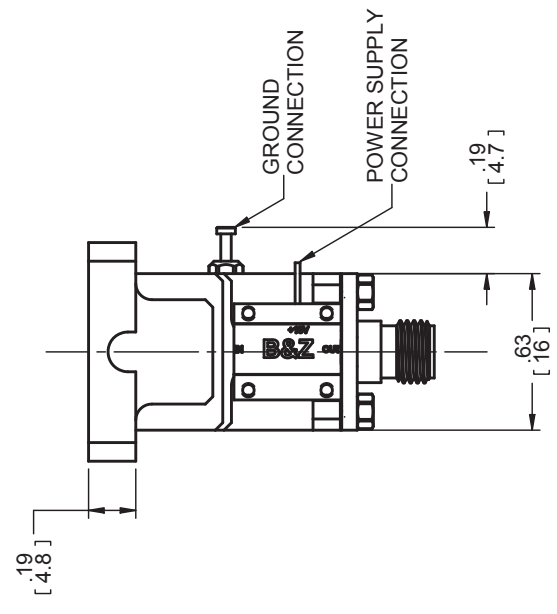
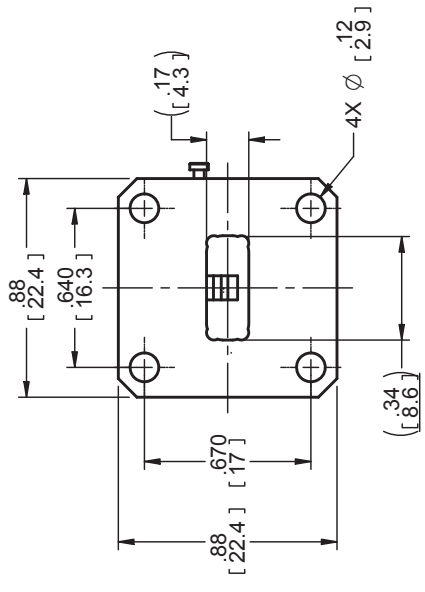
Parameter	Min	Typ	Max	Units
Frequency Range	22	-	24	GHz
Noise Figure*	-	1.8	2	dB
Gain	50	51	-	dB
Gain Flatness (+/-)	-	$\pm 1.0$	$\pm 1.5$	dB
P1 Output Power	+8	+12	-	dBm
Input VSWR	-	-	1.5:1	
Output VSWR	-	-	1.5:1	
Operating Temperature	-55	-	+85	°C
Non-Operating Temp Range	-65	-	+85	°C
RF Input Power (no-damage)	-	-	+13	dBm
Humidity (non-condensing)	-	-	95	%
Voltage	+8	-	+15	VDC
Current	-	225		mA
Input Impedance	50			Ohms

\* Noise Source used for measurement from 0.01 to 26.5 GHz is HP346C .  
 NF Uncertainty (approx. 0. 1dB). 0.05 dB due to ENR of HP 346C; and 0.05 dB, due to the gain modulation of the unit, caused by the HP 346C source impedance change in the ON and OFF state.

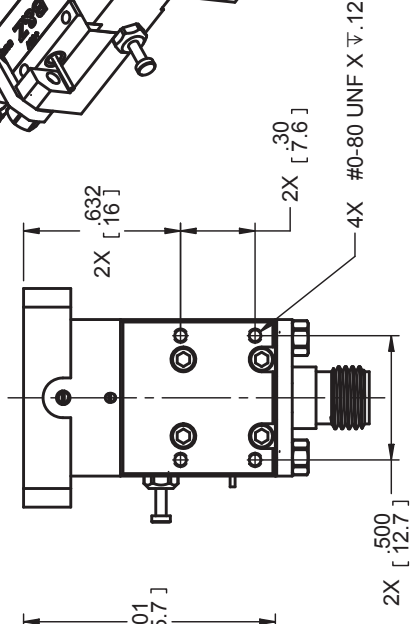
**Typical Data**



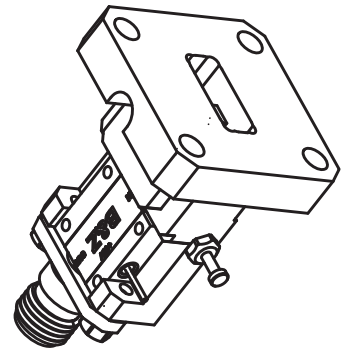
REVISION HISTORY	
REV	DESCRIPTION
DATE	APPROVED



**CUSTOMER MOUNTING HOLES**



**ISOMETRIC VIEW**



<b>B&amp;Z TECHNOLOGIES</b>		REV	A
STONY BROOK, NEW YORK 11790		SIZE	B
TITLE		DWG NO	100170
OUTLINE, WR-34		FILE NAME	100170 A_Outline_WR34.dft
UNLESS OTHERWISE SPECIFIED DIMENSIONS ARE IN INCHES ANGLES ±0.5°		SCALE	WEIGHT: ~50g
2 PL ±0.01 3 PL ±0.005		SHEET 1 OF 1	